

CHECKED BY:

AUTHORISED BY:

PI No	H06591_AA	
ISSUE	NAME	DATE
1	TSS	05/15

PRODUCTION RELEASE

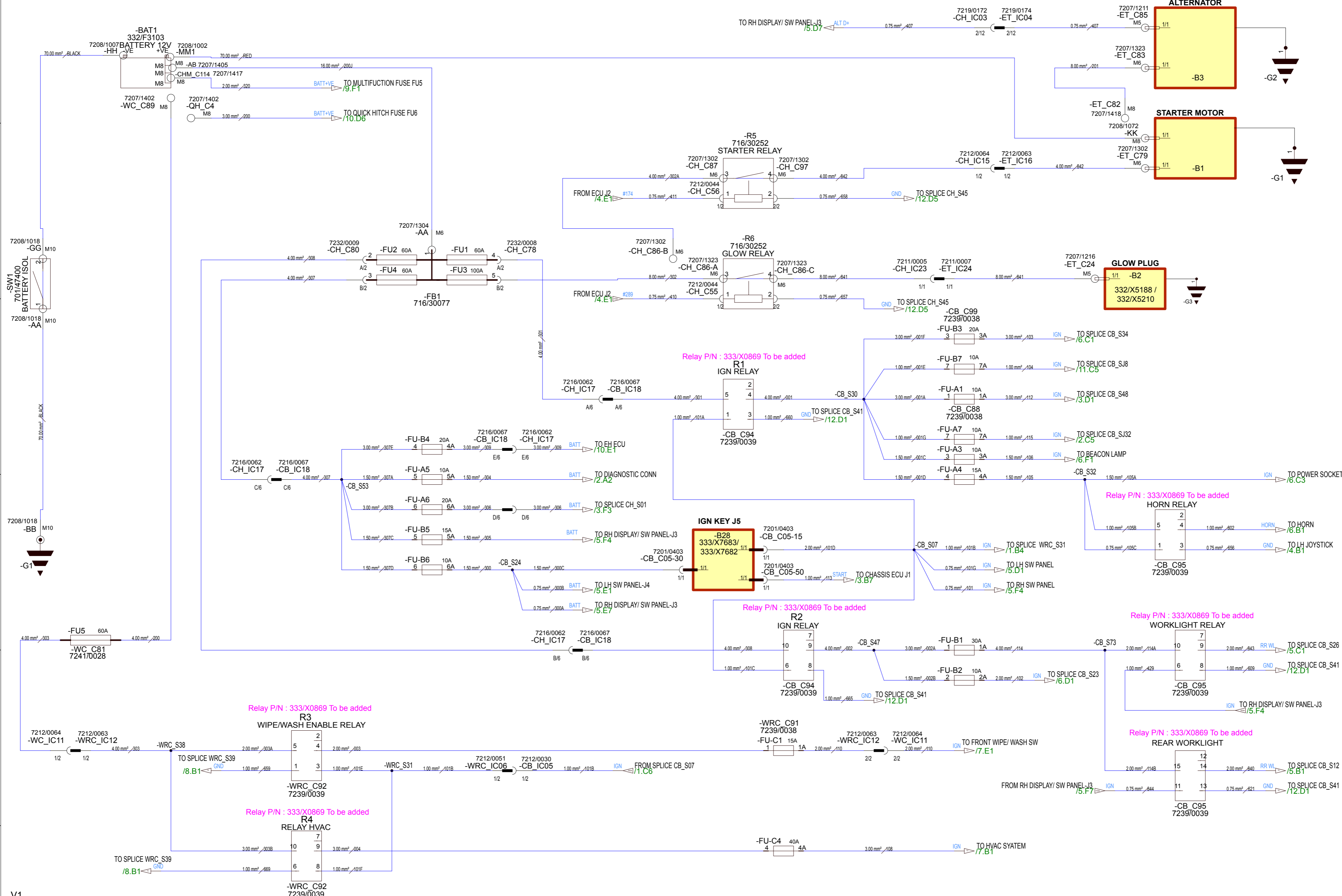
CHECKED BY:

AUTHORISED BY:

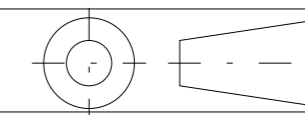
PI No	H06591_AB	
ISSUE	NAME	DATE
2	TSS	11/15

PRODUCTION ISSUE

Changes from 1 to 2 :-  
CKT 618 of power socket separately connected to CB\_EP01 as per EMC test.



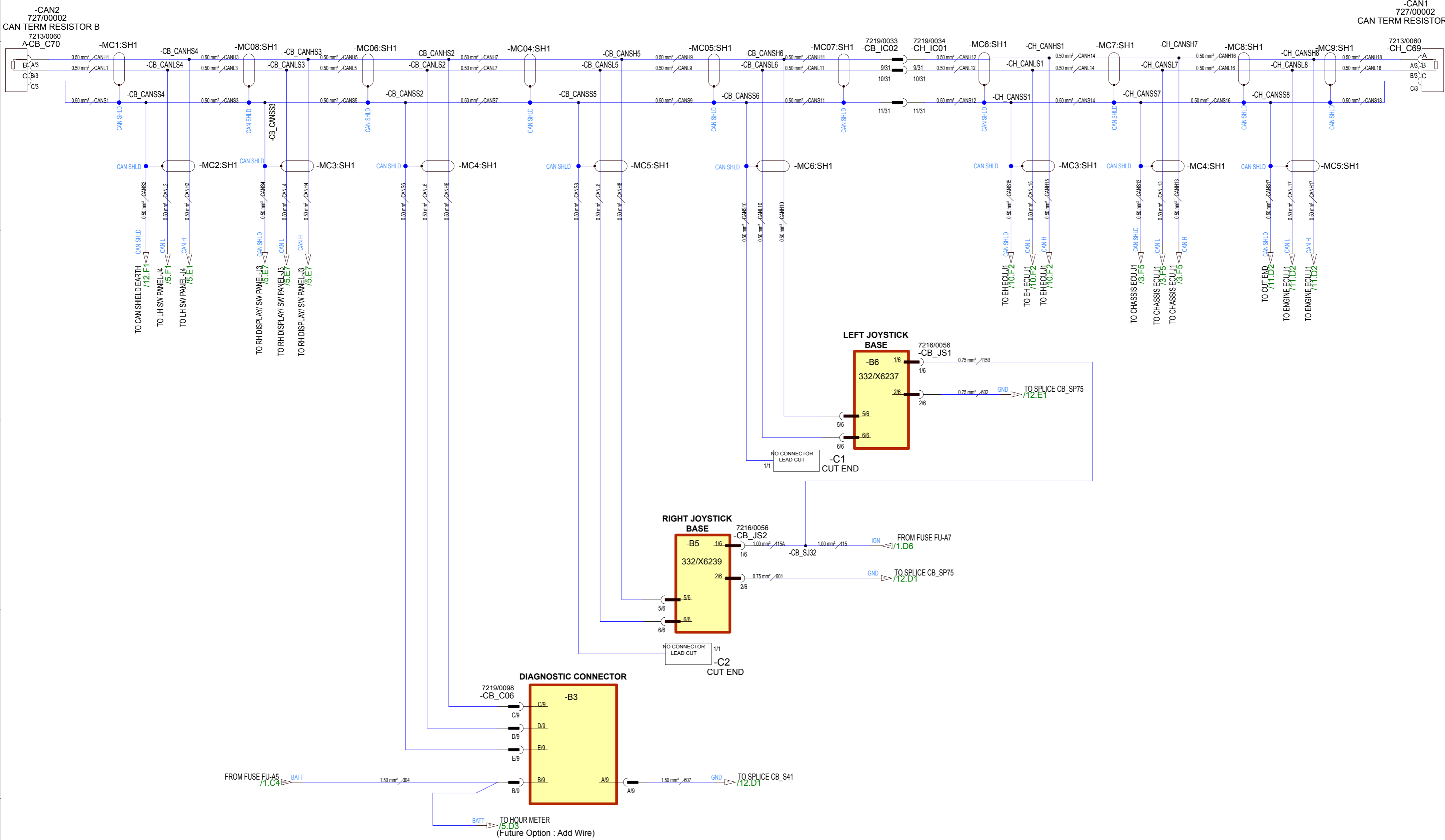
1	2	3	4	5	6	7	8					
DRAWN			DATE	VOLTAGE	PART HAS CODE FEATURES IN ACCORDANCE WITH STD00250	REPLACES	BUSINESS UNIT	M/C USED ON	TITLE	DRAWING NO.	THIS DRAWING IS THE COPYRIGHT PROPERTY OF	
TARUNKUMAR			05/15	12V			SAVANNAH	SKID STEER -INDIA	ELCTRL SCH SSL III SP IGN SW, IGN RLY, FUSES	335/H4421	A2	
COMPONENT TO COMPLY WITH STD00140, DRAWN IN ACCORDANCE WITH 7000/3100 AND STD00024			E3 PROJECT NO. SS00001011		E3 PROJECT ISSUE 02		SCALE: NOT TO SCALE		SHEET 1 OF 13		J.C.BAMFORD EXCAVATORS LTD ROCESTER STAFFORDSHIRE ENGLAND AND MUST NOT BE COPIED OR REPRODUCED WITHOUT WRITTEN CONSENT. STRICTLY SECRET AND CONFIDENTIAL INFORMATION	



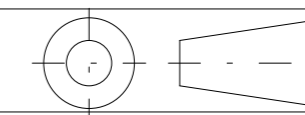
CHECKED BY:		
AUTHORISED BY:		
PI No	H06591_AA	
ISSUE	NAME	DATE
1	TSS	05/15
<b>PRODUCTION RELEASE</b>		
CHECKED BY:		
AUTHORISED BY:		

CHECKED BY:		
AUTHORISED BY:		
PI No	H06591_AB	
ISSUE	NAME	DATE
2	TSS	11/15
<b>PRODUCTION ISSUE</b>		

Changes from 1 to 2 :-  
CKT 618 of power socket  
separately connected to  
CB\_EP01 as per EMC  
test.



V1	DRAWN	DATE	VOLTAGE	PART HAS CODE FEATURES IN ACCORDANCE WITH STD00250	REPLACES	BUSINESS UNIT	M/C USED ON	TITLE	DRAWING NO.	THIS DRAWING IS THE COPYRIGHT PROPERTY OF	
A	TARUNKUMAR	05/15	12V	C		SAVANNAH	SKID STEER -INDIA	ELCTRL SCH SSL III SP CAN SYSTEM	335/H4421	ROCESTER STAFFORDSHIRE ENGLAND	
COMPONENT TO COMPLY WITH STD00140, DRAWN IN ACCORDANCE WITH 7000/3100 AND STD00024							E3 PROJECT NO. SS00001011	E3 PROJECT ISSUE 02	SCALE: NOT TO SCALE	SHEET 2 OF 13	A2 EXCAVATORS LTD AND MUST NOT BE COPIED OR REPRODUCED WITHOUT WRITTEN CONSENT. STRICTLY SECRET AND CONFIDENTIAL INFORMATION



CHECKED BY:

AUTHORISED BY:

PI No H06591\_AA

ISSUE 1 NAME TSS DATE 05/15

PRODUCTION RELEASE

CHECKED BY:

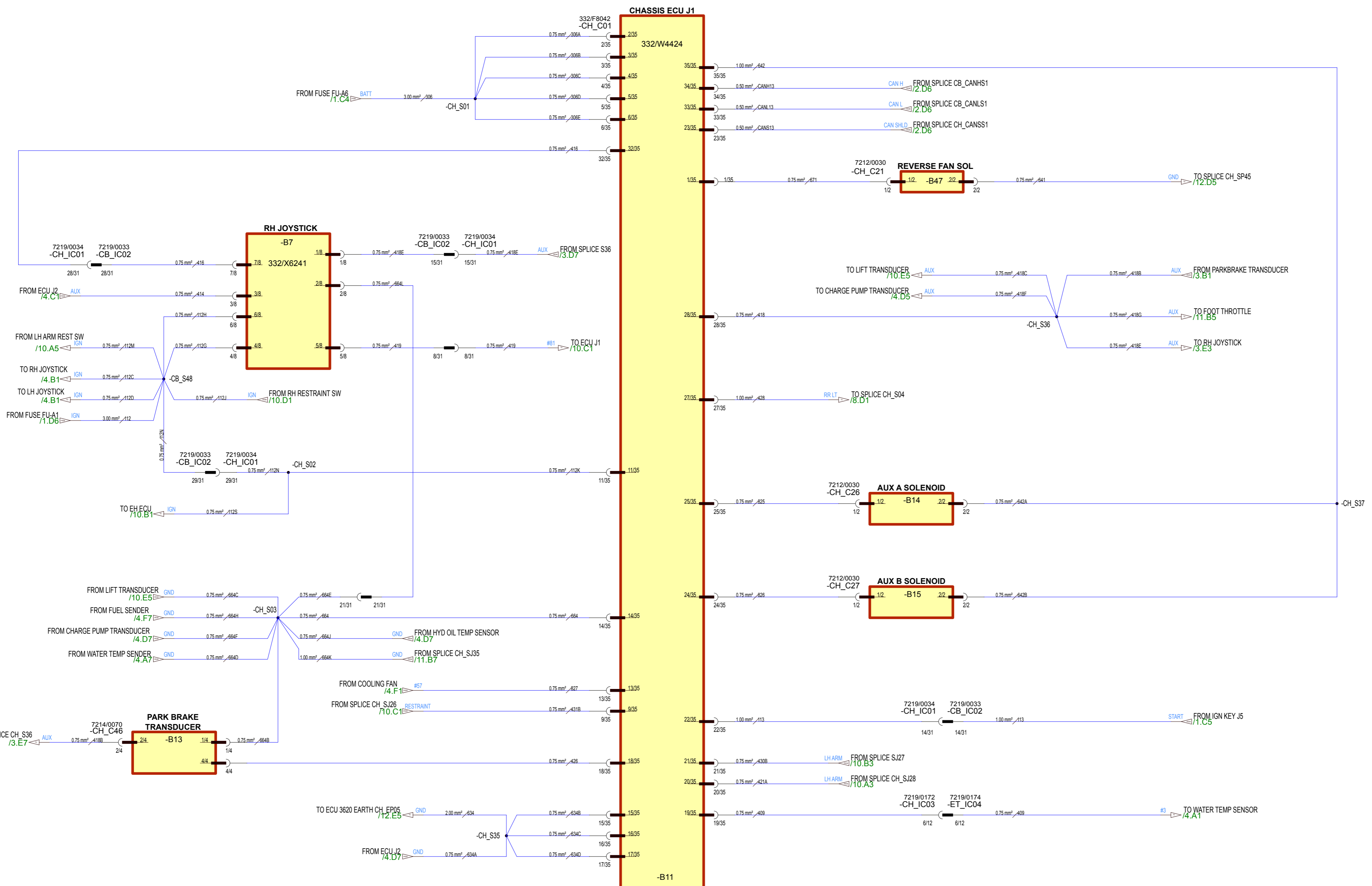
AUTHORISED BY:

PI No H06591\_AB

ISSUE 2 NAME TSS DATE 11/15

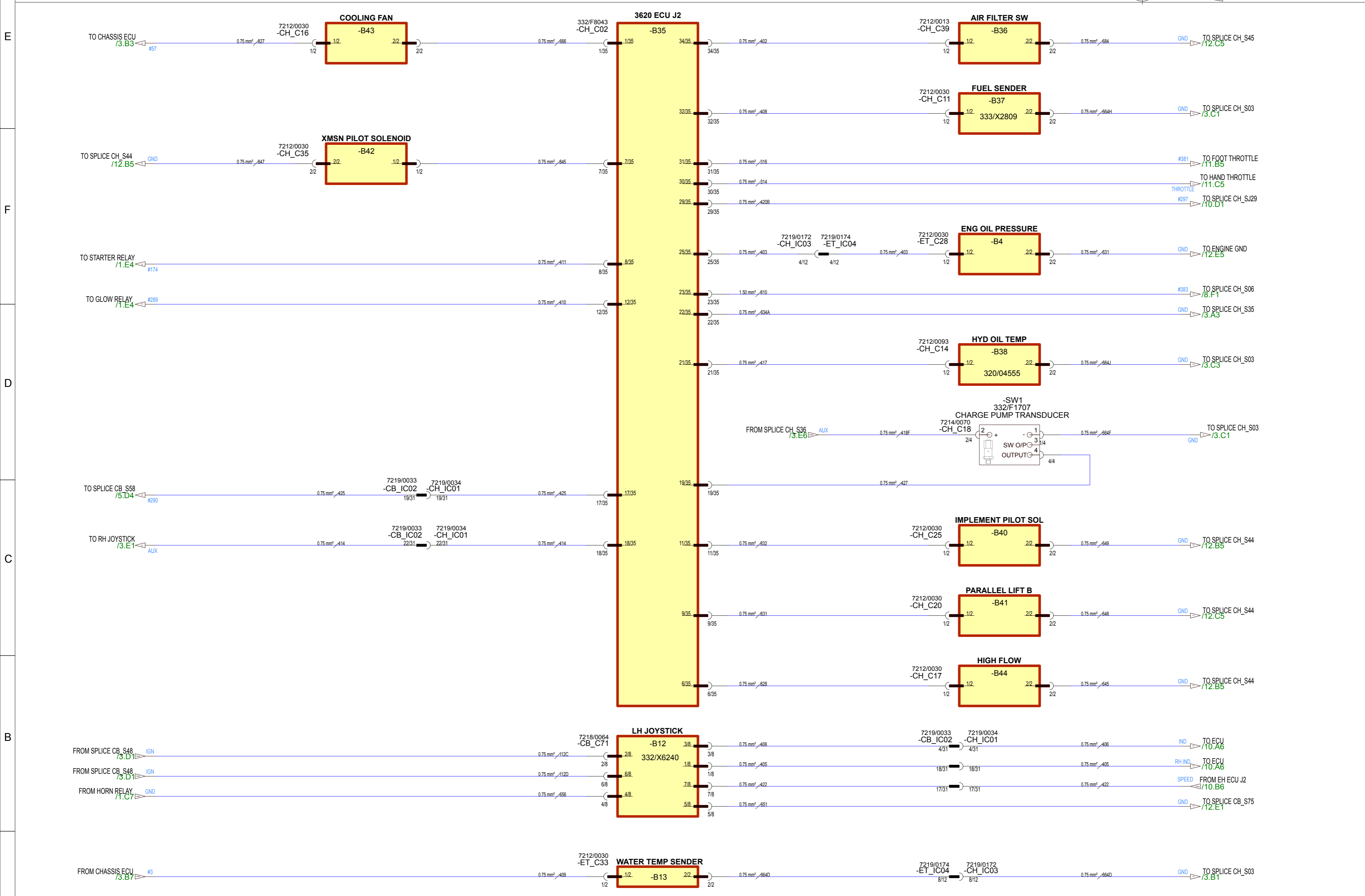
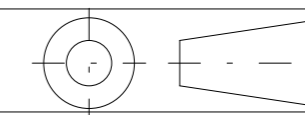
PRODUCTION ISSUE

Changes from 1 to 2 :- CKT 618 of power socket separately connected to CB\_EP01 as per EMC test.



V1

DRAWN	DATE	VOLTAGE	PART HAS CODE FEATURES IN ACCORDANCE WITH STD00250	REPLACES	BUSINESS UNIT	M/C USED ON	TITLE	DRAWING NO.	THIS DRAWING IS THE COPYRIGHT PROPERTY OF
TARUNKUMAR	05/15	12V	C		SAVANNAH	SKID STEER -INDIA	ELCTRL SCH SSL III SP RH JOY ,ECU, SOL, TRANS	335/H4421	A2 J.C.BAMFORD EXCAVATORS LTD
COMPONENT TO COMPLY WITH STD00140, DRAWN IN ACCORDANCE WITH 7000/3100 AND STD00024						E3 PROJECT NO. SS00001011	E3 PROJECT ISSUE 02	SCALE: NOT TO SCALE	ROCESTER STAFFORDSHIRE ENGLAND AND MUST NOT BE COPIED OR REPRODUCED WITHOUT WRITTEN CONSENT. STRICTLY SECRET AND CONFIDENTIAL INFORMATION
1	2	3	4	5	6	7	8	SHEET 3 OF 13	



CHECKED BY:

AUTHORISED BY:

PI No	H06591_AA	
ISSUE	NAME	DATE
1	TSS	05/15

**PRODUCTION RELEASE**

CHECKED BY:

AUTHORISED BY:

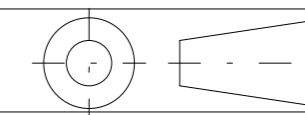
PI No	H06591_AB	
ISSUE	NAME	DATE
2	TSS	11/15

**PRODUCTION ISSUE**

Changes from 1 to 2 :-  
CKT 618 of power socket separately connected to CB\_EP01 as per EMC test.

V1

DRAWN	DATE	VOLTAGE	PART HAS CODE FEATURES IN ACCORDANCE WITH STD00250	REPLACES	BUSINESS UNIT	M/C USED ON	TITLE	DRAWING NO.	THIS DRAWING IS THE COPYRIGHT PROPERTY OF		
TARUNKUMAR	05/15	12V			SAVANNAH	SKID STEER -INDIA	ELCTRL SCH SSL III SP 3620ECU, SENSORS,RH JOYST	335/H4421	A2		
COMPONENT TO COMPLY WITH STD00140, DRAWN IN ACCORDANCE WITH 7000/3100 AND STD00024						E3 PROJECT NO. SS00001011	E3 PROJECT ISSUE 02	SCALE: NOT TO SCALE	SHEET 4 OF 13		
1	2	3	4	5	6	7	8	ROCESTER STAFFORDSHIRE ENGLAND AND MUST NOT BE COPIED OR REPRODUCED WITHOUT WRITTEN CONSENT. STRICTLY SECRET AND CONFIDENTIAL INFORMATION			



CHECKED BY:

AUTHORISED BY:

PI No H06591\_AA

ISSUE 1 NAME TSS DATE 05/15

PRODUCTION RELEASE

CHECKED BY:

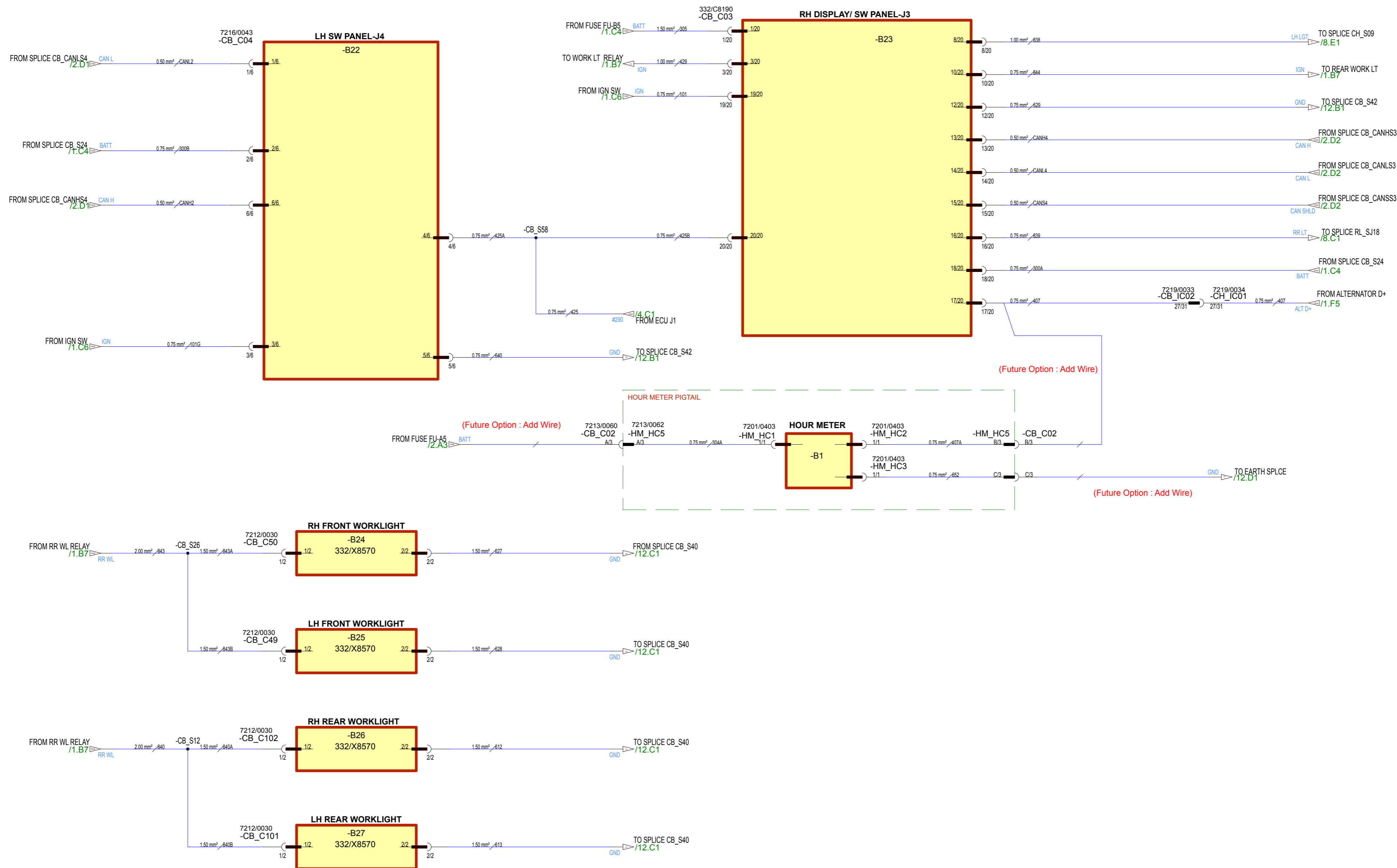
AUTHORISED BY:

PI No H06591\_AB

ISSUE 2 NAME TSS DATE 11/15

PRODUCTION ISSUE

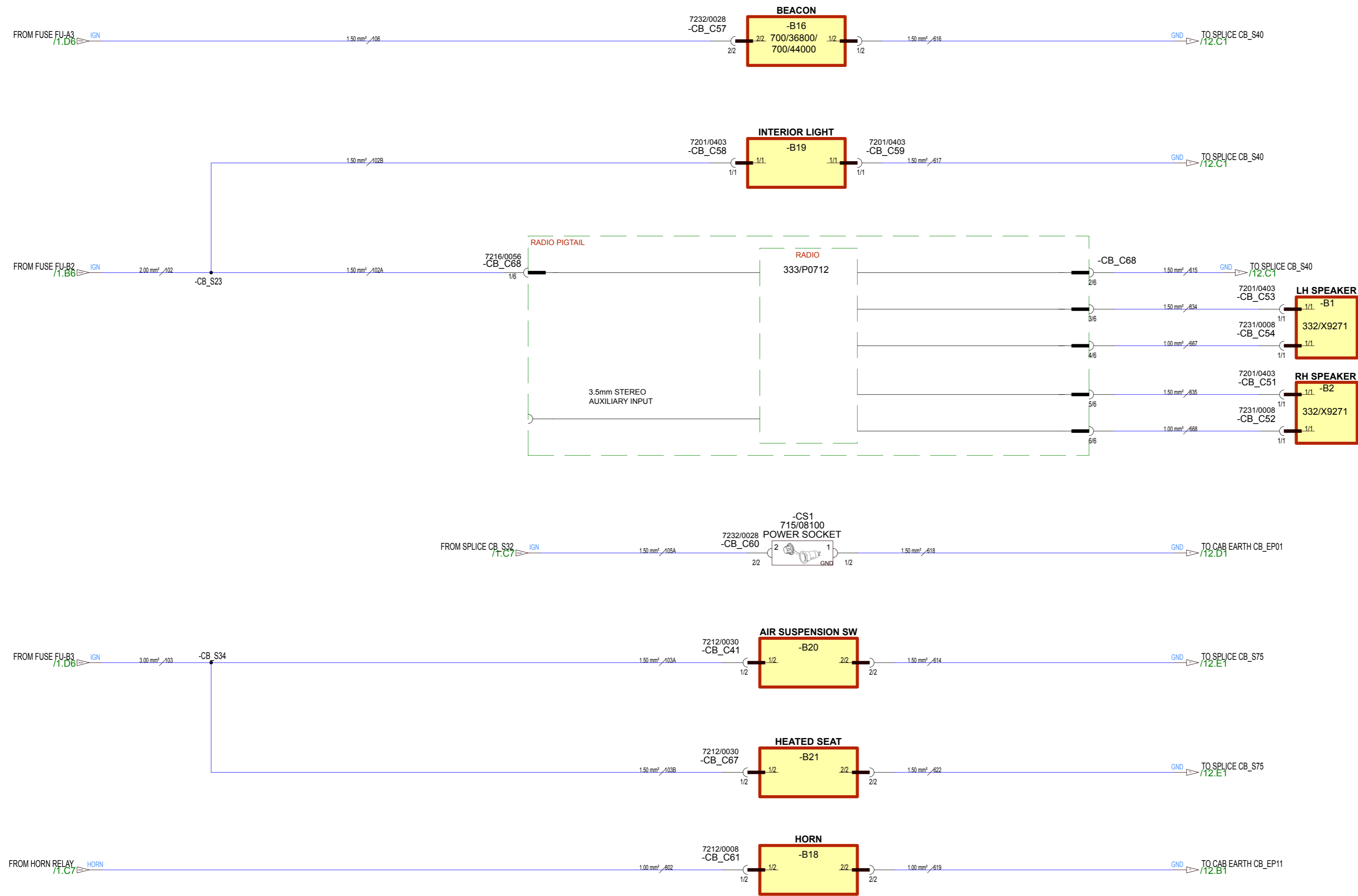
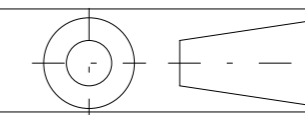
Changes from 1 to 2 :- CKT 618 of power socket separately connected to CB\_EP01 as per EMC test.



V1

1	2	3	4	5	6	7	8
DRAWN	DATE	VOLTAGE	PART HAS CODE FEATURES IN ACCORDANCE WITH STD00250	REPLACES	BUSINESS UNIT	M/C USED ON	TITLE
TARUNKUMAR	05/15	12V	C		SAVANNAH	SKID STEER -INDIA	ELCTRL SCH SSL III SP SW PANEL, WORK LT
COMPONENT TO COMPLY WITH STD00140, DRAWN IN ACCORDANCE WITH 7000/3100 AND STD00024				E3 PROJECT NO. SS00001011	E3 PROJECT ISSUE 02	SCALE: NOT TO SCALE	DRAWING NO. 335/H4421
						SHEET 5 OF 13	THIS DRAWING IS THE COPYRIGHT PROPERTY OF JCB EXCAVATORS LTD ROCESTER STAFFORDSHIRE ENGLAND AND MUST NOT BE COPIED OR REPRODUCED WITHOUT WRITTEN CONSENT. STRICTLY SECRET AND CONFIDENTIAL INFORMATION

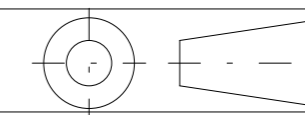
A2



CHECKED BY:		
AUTHORISED BY:		
PI No	H06591_AA	
ISSUE	NAME	DATE
1	TSS	05/15
PRODUCTION RELEASE		
CHECKED BY:		
AUTHORISED BY:		
PI No	H06591_AB	
ISSUE	NAME	DATE
2	TSS	11/15
PRODUCTION ISSUE		
Changes from 1 to 2 :- CKT 618 of power socket separately connected to CB_EP01 as per EMC test.		

DRAWN		DATE	VOLTAGE	PART HAS CODE FEATURES IN ACCORDANCE WITH STD00250	REPLACES	BUSINESS UNIT	M/C USED ON	TITLE	DRAWING NO.	THIS DRAWING IS THE COPYRIGHT PROPERTY OF		
TARUNKUMAR		05/15	12V			SAVANNAH	SKID STEER -INDIA	ELCTRL SCH SSL III SP RADIO, HORN, INTERIOR LT	335/H4421	A2		
COMPONENT TO COMPLY WITH STD00140, DRAWN IN ACCORDANCE WITH 7000/3100 AND STD00024							E3 PROJECT NO. SS00001011	E3 PROJECT ISSUE 02	SCALE: NOT TO SCALE	SHEET 6 OF 13		
1	2	3	4	5	6	7	8					

ROCESTER STAFFORDSHIRE ENGLAND  
AND MUST NOT BE COPIED OR REPRODUCED WITHOUT WRITTEN CONSENT.  
STRICTLY SECRET AND CONFIDENTIAL INFORMATION



CHECKED BY:		
AUTHORISED BY:		
PI No	H06591_AA	
ISSUE	NAME	DATE
1	TSS	05/15

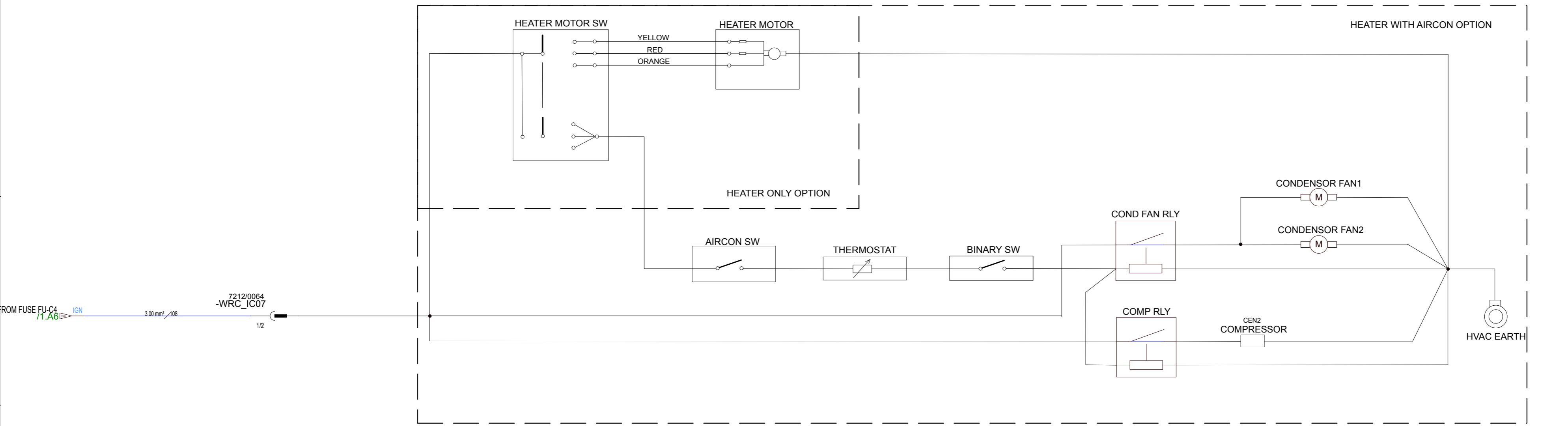
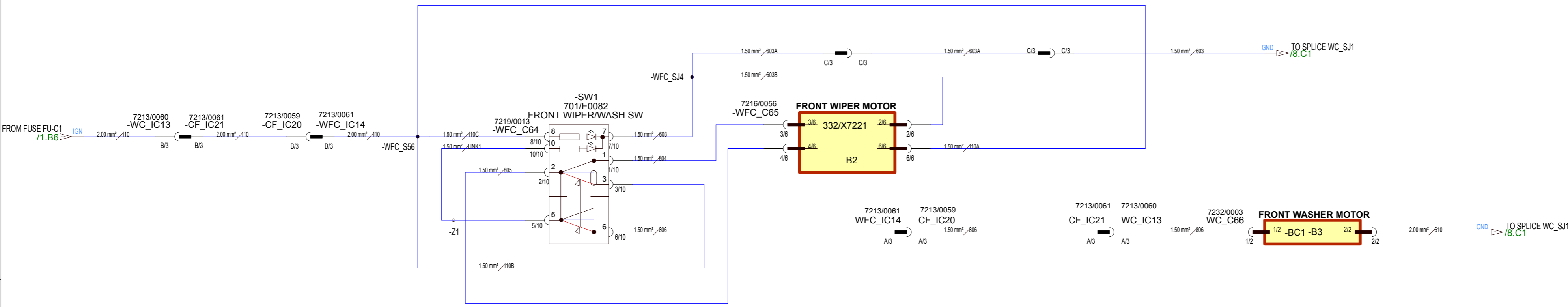
PRODUCTION RELEASE

CHECKED BY:		
AUTHORISED BY:		

PI No	H06591_AB	
ISSUE	NAME	DATE
2	TSS	11/15

PRODUCTION ISSUE

Changes from 1 to 2 :-  
CKT 618 of power socket  
separately connected to  
CB\_EP01 as per EMC  
test.



V1

DRAWN	DATE	VOLTAGE	PART HAS CODE FEATURES IN ACCORDANCE WITH STD00250	REPLACES	BUSINESS UNIT	M/C USED ON	TITLE	DRAWING NO.
TARUNKUMAR	05/15	12V	C		SAVANNAH	SKID STEER -INDIA	ELCTRL SCH SSL III SP WASH SW, WASH&WIPE MOTOR	335/H4421
COMPONENT TO COMPLY WITH STD00140, DRAWN IN ACCORDANCE WITH 7000/3100 AND STD00024						E3 PROJECT NO. SS00001011	E3 PROJECT ISSUE 02	SHEET 7 OF 13

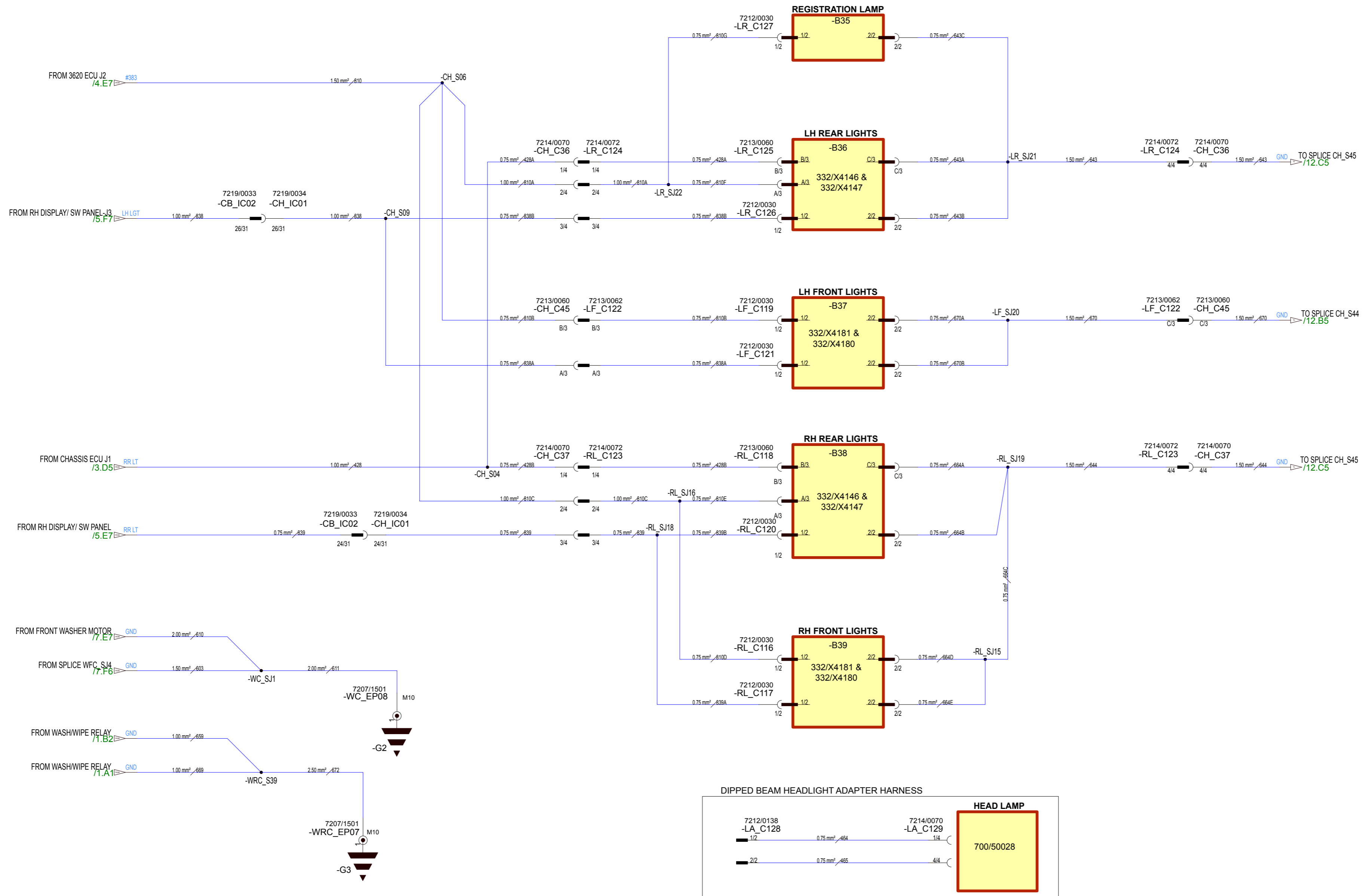
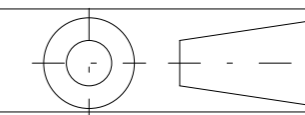
THIS DRAWING IS THE COPYRIGHT PROPERTY OF

J.C.BAMFORD EXCAVATORS LTD

ROCESTER STAFFORDSHIRE ENGLAND

AND MUST NOT BE COPIED OR REPRODUCED WITHOUT WRITTEN CONSENT.  
STRICTLY SECRET AND CONFIDENTIAL INFORMATION

A2



CHECKED BY:

AUTHORISED BY:

PI No	H06591_AA	
ISSUE	NAME	DATE
1	TSS	05/15

PRODUCTION RELEASE

CHECKED BY:

AUTHORISED BY:

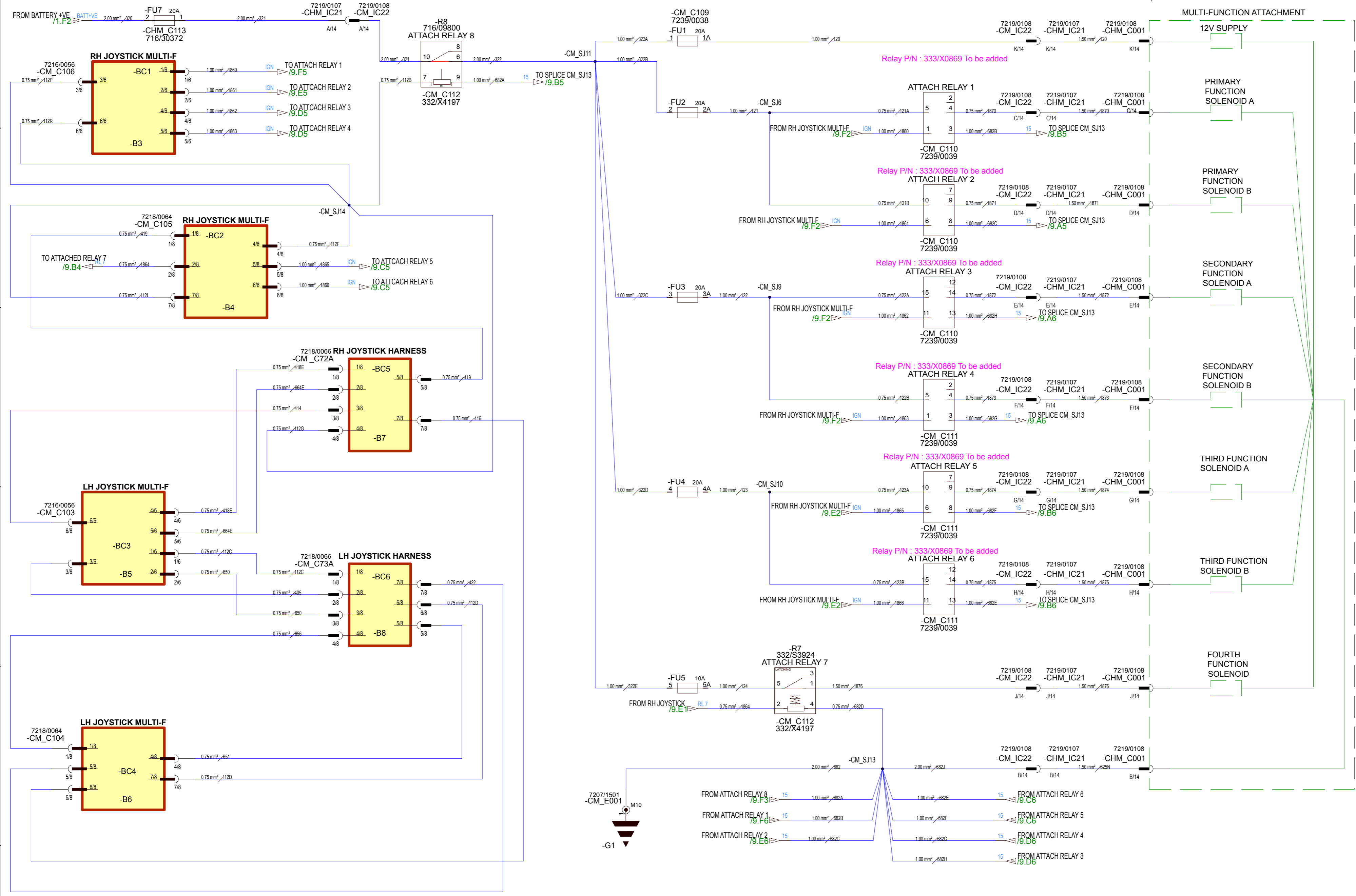
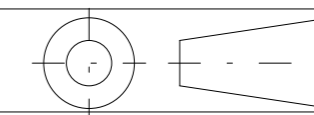
PI No	H06591_AB	
ISSUE	NAME	DATE
2	TSS	11/15

PRODUCTION ISSUE

Changes from 1 to 2 :-  
CKT 618 of power socket separately connected to CB\_EP01 as per EMC test.

V1	DRAWN	DATE	VOLTAGE	PART HAS CODE FEATURES IN ACCORDANCE WITH STD00250	REPLACES	BUSINESS UNIT	M/C USED ON	TITLE	DRAWING NO.	THIS DRAWING IS THE COPYRIGHT PROPERTY OF	
A	TARUNKUMAR	05/15	12V	C		SAVANNAH	SKID STEER -INDIA	ELCTRL SCH SSL III SP REAR & FRONT LT	335/H4421	J.C.BAMFORD EXCAVATORS LTD	
COMPONENT TO COMPLY WITH STD00140, DRAWN IN ACCORDANCE WITH 7000/3100 AND STD00024							E3 PROJECT NO. SS00001011	E3 PROJECT ISSUE 02	SCALE: NOT TO SCALE	SHEET 8 OF 13	ROCESTER STAFFORDSHIRE ENGLAND AND MUST NOT BE COPIED OR REPRODUCED WITHOUT WRITTEN CONSENT. STRICTLY SECRET AND CONFIDENTIAL INFORMATION
1	2	3	4	5	6	7	8				



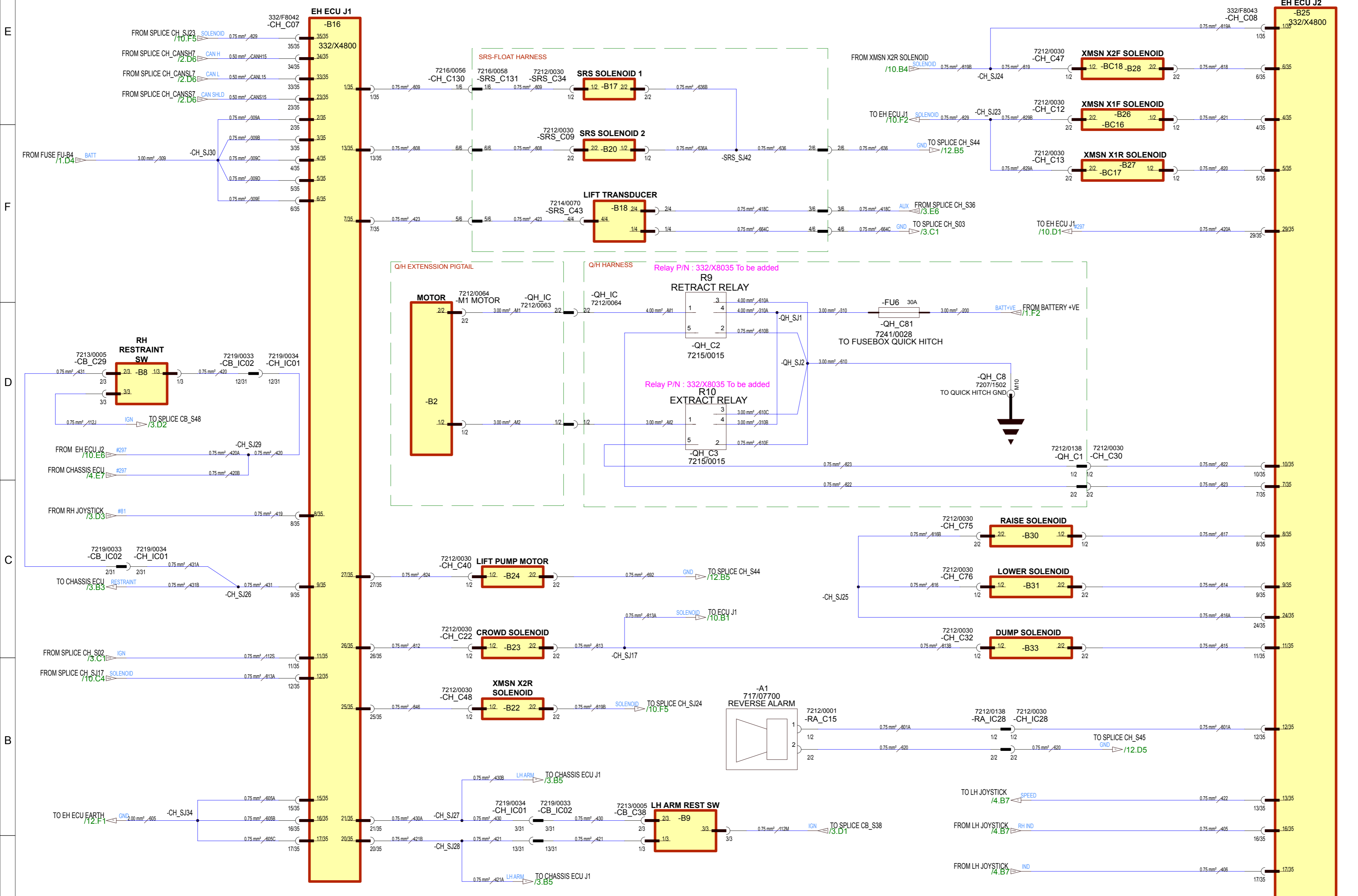


CHECKED BY:

AUTHORISED BY:

PI No	H06591_AA	
ISSUE	NAME	DATE
1	TSS	05/15
<b>PRODUCTION RELEASE</b>		
CHECKED BY:		
AUTHORISED BY:		
PI No	H06591_AB	
ISSUE	NAME	DATE
2	TSS	11/15
<b>PRODUCTION ISSUE</b>		
Changes from 1 to 2 :- CKT 618 of power socket separately connected to CB_EP01 as per EMC test.		

V1	DRAWN	DATE	VOLTAGE	PART HAS CODE FEATURES IN ACCORDANCE WITH STD00250	REPLACES	BUSINESS UNIT	M/C USED ON	TITLE	DRAWING NO.	THIS DRAWING IS THE COPYRIGHT PROPERTY OF	
	TARUNKUMAR	05/15	12V	C		SAVANNAH	SKID STEER -INDIA	ELCTRL SCH SSL III SP MULTIFUNCTION	335/H4421	A2	
COMPONENT TO COMPLY WITH STD00140, DRAWN IN ACCORDANCE WITH 7000/3100 AND STD00024							E3 PROJECT NO. SS00001011	E3 PROJECT ISSUE 02	SCALE: NOT TO SCALE	SHEET 9 OF 13	J.C.BAMFORD ROCESTER STAFFORDSHIRE ENGLAND AND MUST NOT BE COPIED OR REPRODUCED WITHOUT WRITTEN CONSENT. STRICTLY SECRET AND CONFIDENTIAL INFORMATION
1	2	3	4	5	6	7	8				



CHECKED BY:

AUTHORISED BY:

PI No	H06591_AA	
ISSUE	NAME	DATE
1	TSS	05/15

**PRODUCTION RELEASE**

CHECKED BY:

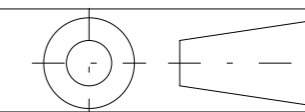
AUTHORISED BY:

PI No	H06591_AB	
ISSUE	NAME	DATE
2	TSS	11/15

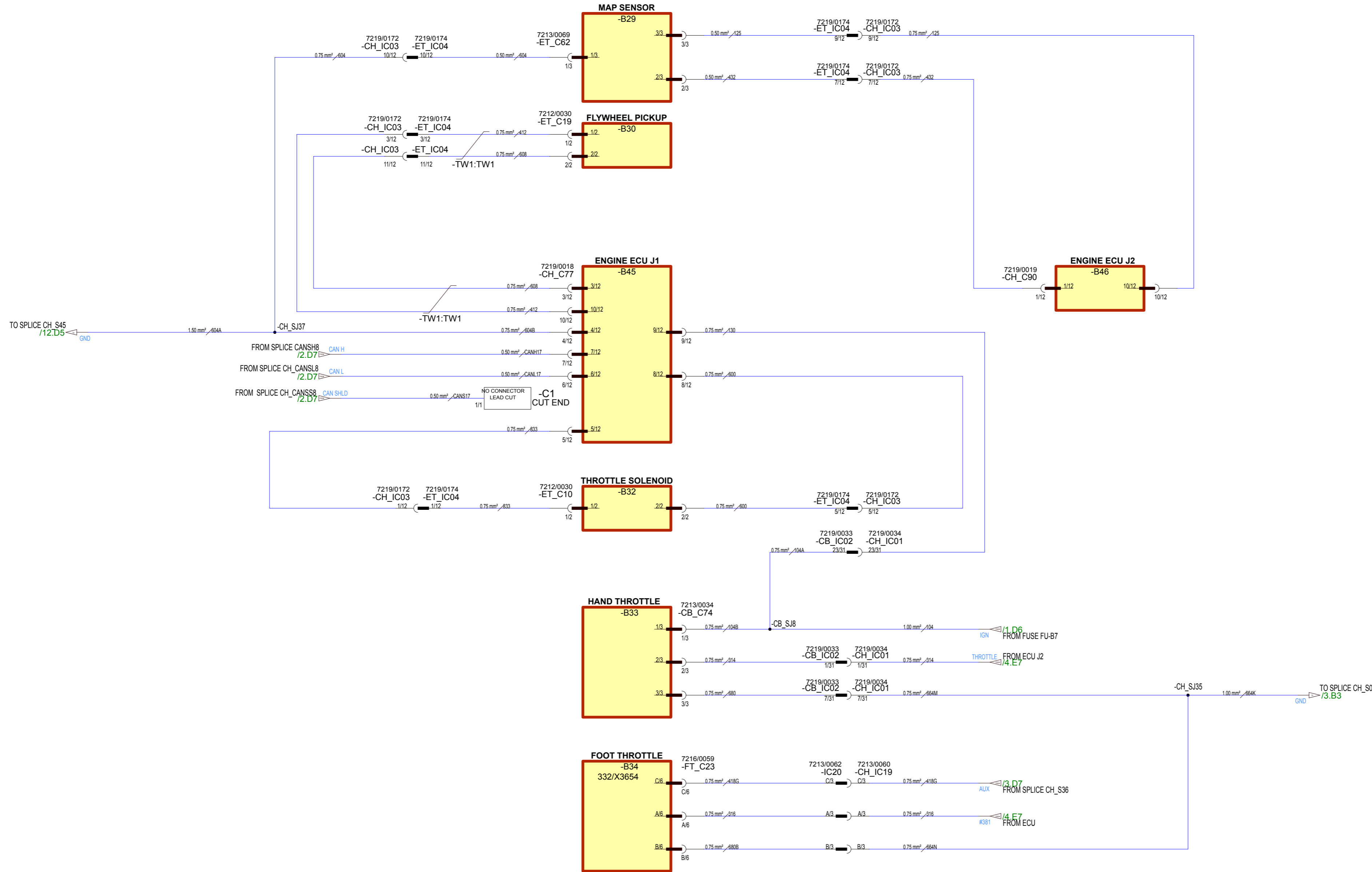
**PRODUCTION ISSUE**

Changes from 1 to 2 :-  
CKT 618 of power socket separately connected to CB\_EP01 as per EMC test.

V1	DRAWN	DATE	VOLTAGE	PART HAS CODE FEATURES IN ACCORDANCE WITH STD00250	REPLACES	BUSINESS UNIT	M/C USED ON	TITLE	DRAWING NO.	THIS DRAWING IS THE COPYRIGHT PROPERTY OF	
A	TARUNKUMAR	05/15	12V	C		SAVANNAH	SKID STEER -INDIA	ELCTRL SCH SSL III SP EH ECU, SOL	335/H4421	JCB EXCAVATORS LTD	
COMPONENT TO COMPLY WITH STD00140, DRAWN IN ACCORDANCE WITH 7000/3100 AND STD00024							E3 PROJECT NO. SS00001011	E3 PROJECT ISSUE 02	SCALE: NOT TO SCALE	SHEET 10 OF 13	
1	2	3	4	5	6	7	8	ROCESTER STAFFORDSHIRE ENGLAND AND MUST NOT BE COPIED OR REPRODUCED WITHOUT WRITTEN CONSENT. STRICTLY SECRET AND CONFIDENTIAL INFORMATION			



CHECKED BY:		
AUTHORISED BY:		
PI No	H06591_AA	
ISSUE	NAME	DATE
1	TSS	05/15
PRODUCTION RELEASE		
CHECKED BY:		
AUTHORISED BY:		
PI No	H06591_AB	
ISSUE	NAME	DATE
2	TSS	11/15
PRODUCTION ISSUE		
Changes from 1 to 2 :- CKT 618 of power socket separately connected to CB_EP01 as per EMC test.		



V1

DRAWN	DATE	VOLTAGE	PART HAS CODE FEATURES IN ACCORDANCE WITH STD00250	REPLACES	BUSINESS UNIT	M/C USED ON	TITLE	DRAWING NO.
TARUNKUMAR	05/15	12V	C		SAVANNAH	SKID STEER -INDIA	ELCTRL SCH SSL III SP THROTTLE, ENG.ECU, FLYWL SCHEMATIC	335/H4421
COMPONENT TO COMPLY WITH STD00140, DRAWN IN ACCORDANCE WITH 7000/3100 AND STD00024						E3 PROJECT NO. SS00001011	E3 PROJECT ISSUE 02	SHEET 11 OF 13

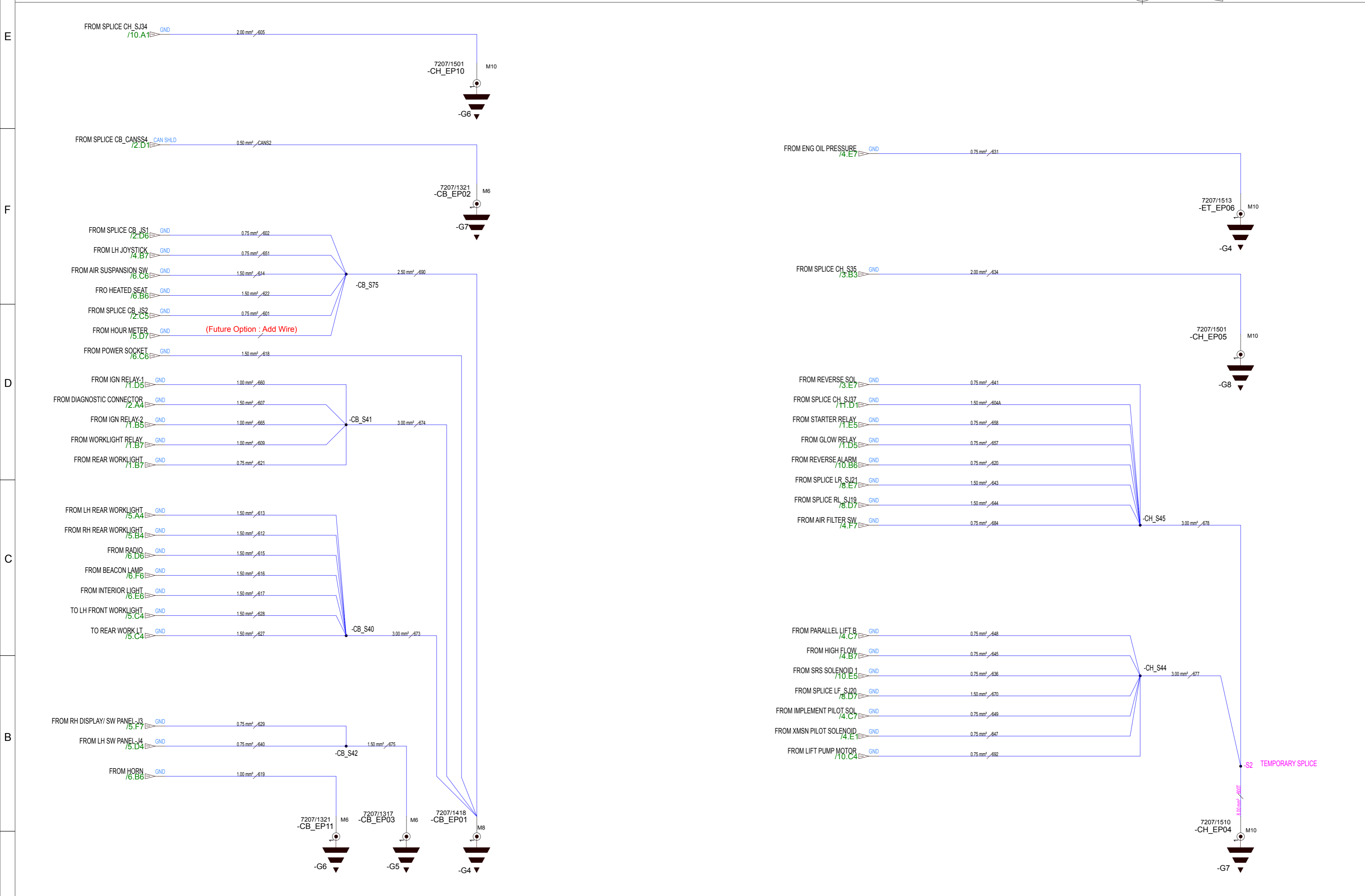
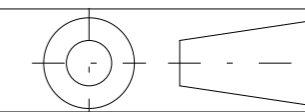
THIS DRAWING IS THE COPYRIGHT PROPERTY OF

J.C.BAMFORD EXCAVATORS LTD

ROCESTER STAFFORDSHIRE ENGLAND

AND MUST NOT BE COPIED OR REPRODUCED WITHOUT WRITTEN CONSENT. STRICTLY SECRET AND CONFIDENTIAL INFORMATION

A2



CHECKED BY:

AUTHORISED BY:

PI No	H06591_AA	
ISSUE	NAME	DATE
1	TSS	05/15

**PRODUCTION RELEASE**

CHECKED BY:

AUTHORISED BY:

PI No	H06591_AB	
ISSUE	NAME	DATE
2	TSS	11/15

**PRODUCTION ISSUE**

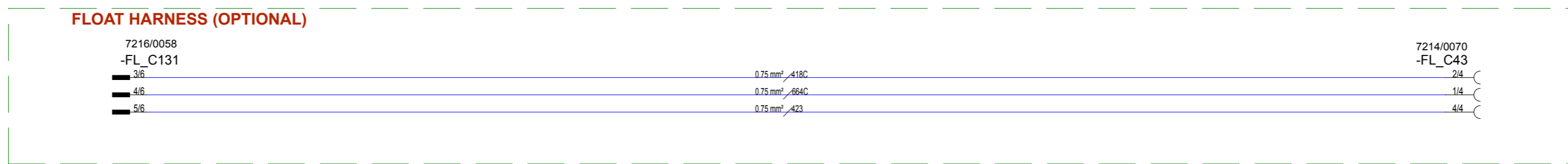
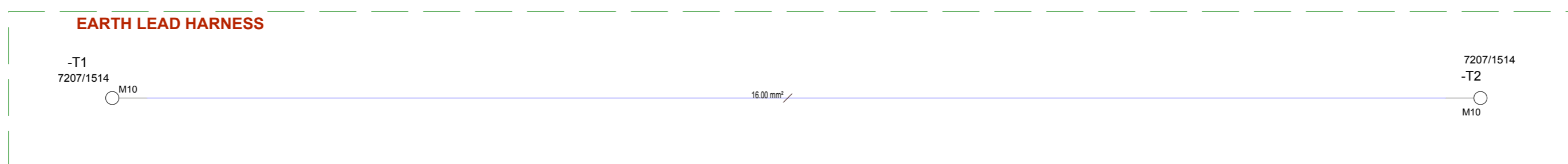
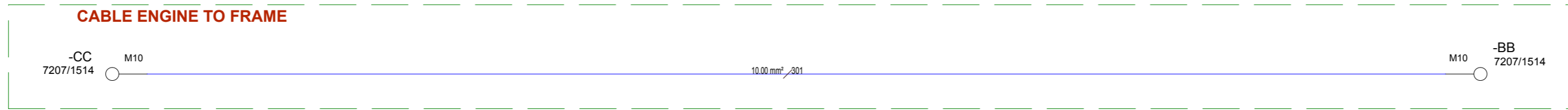
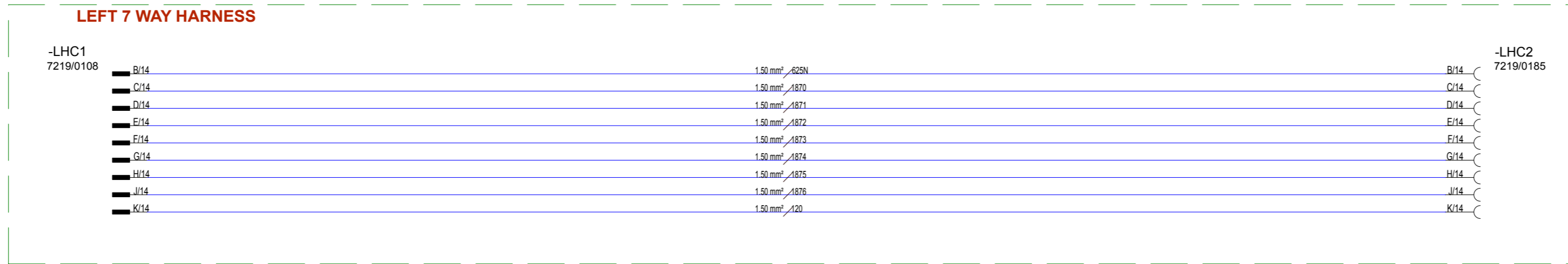
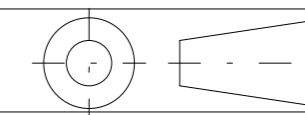
Changes from 1 to 2 :-  
CKT 618 of power socket  
separately connected to  
CB\_EP01 as per EMC  
test.

V1

DRAWN	DATE	VOLTAGE	PART HAS CODE FEATURES IN ACCORDANCE WITH STD00250	REPLACES	BUSINESS UNIT	M/C USED ON	TITLE	DRAWING NO.	THIS DRAWING IS THE COPYRIGHT PROPERTY OF
TARUNKUMAR	05/15	12V			SAVANNAH	SKID STEER -INDIA	ELCTRL SCH SSL III SP EARTHING	335/H4421	J.C.BAMFORD ROCESTER STAFFORDSHIRE ENGLAND AND MUST NOT BE COPIED OR REPRODUCED WITHOUT WRITTEN CONSENT. STRICTLY SECRET AND CONFIDENTIAL INFORMATION
COMPONENT TO COMPLY WITH STD00140, DRAWN IN ACCORDANCE WITH 7000/3100 AND STD00024						E3 PROJECT NO. SS00001011	E3 PROJECT ISSUE 02	SCALE: NOT TO SCALE	SHEET 12 OF 13



A2



CHECKED BY:

AUTHORISED BY:

PI No	H06591_AA	
ISSUE	NAME	DATE
1	TSS	05/15

**PRODUCTION RELEASE**

CHECKED BY:

AUTHORISED BY:

PI No	H06591_AB	
ISSUE	NAME	DATE
2	TSS	11/15

**PRODUCTION ISSUE**

Changes from 1 to 2 :-  
CKT 618 of power socket separately connected to CB\_EP01 as per EMC test.

V1

DRAWN	DATE	VOLTAGE	PART HAS CODE FEATURES IN ACCORDANCE WITH STD00250	REPLACES	BUSINESS UNIT	M/C USED ON	TITLE	DRAWING NO.
TARUNKUMAR	05/15	12V	<b>C</b>		SAVANNAH	SKID STEER -INDIA	ELCTRL SCH SSL III SP OPTIONAL W/H CONNECTIONS CLASSIFIED IN SCHEMATIC	335/H4421
COMPONENT TO COMPLY WITH STD00140, DRAWN IN ACCORDANCE WITH 7000/3100 AND STD00024						E3 PROJECT NO. SS00001011	E3 PROJECT ISSUE 02	SCALE: NOT TO SCALE
1	2	3	4	5	6	7	8	

THIS DRAWING IS THE COPYRIGHT PROPERTY OF

J.C.BAMFORD EXCAVATORS LTD

ROCESTER STAFFORDSHIRE ENGLAND

AND MUST NOT BE COPIED OR REPRODUCED WITHOUT WRITTEN CONSENT.  
STRICTLY SECRET AND CONFIDENTIAL INFORMATION

**A2**